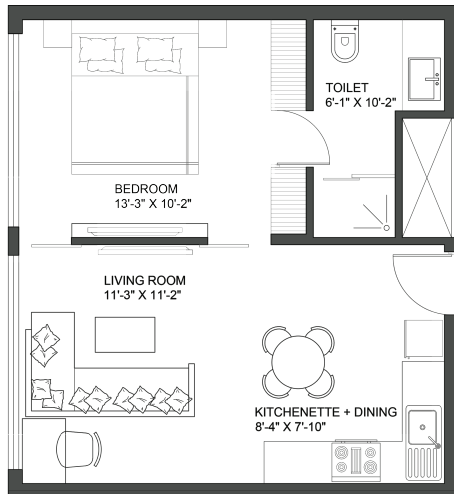




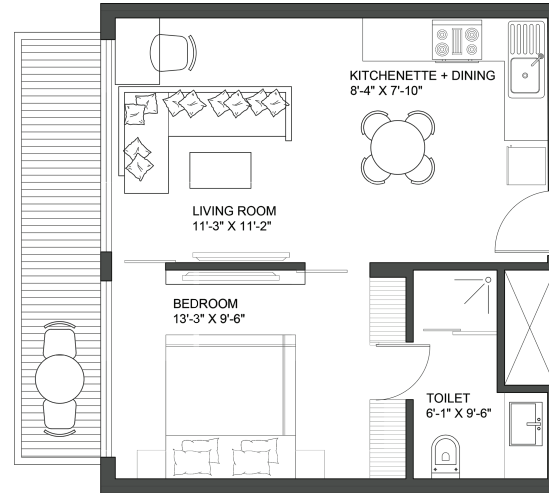
WORLD TRADE CENTER™ CHANDIGARH

SUITES

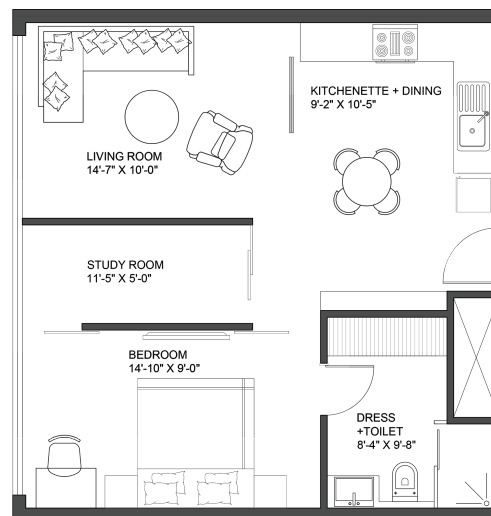
Unit Layout Plan



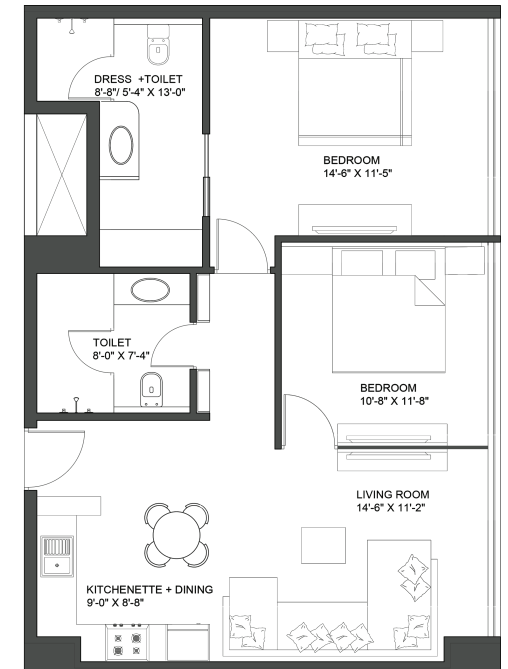
1 BHK Suite
 Standard = 735 sqft
 Executive = 770 sqft
 Superior = 880 sqft



1 BHK Suite with Balcony
 Standard = 810 sqft
 Executive = 845 sqft
 Superior = 945 sqft



1 BHK Suite with Study
 Standard = 1,035 sqft
 Executive = 1,155 sqft
 Superior = 1,285 sqft



2 BHK Suite
 Executive = 1,380 sqft
 Superior = 1,500 sqft

DISCLAIMER- World Trade Center, WTC and Map Design Logo are the registered trademarks of the World Trade Centers Association, Inc., New York [WTCA], and WTC Noida Development Company Pvt. Ltd.- a group company of Viridian, having it's office at GF-09 Plaza M6 District Centre, Jasola, New Delhi- 110025, has entered into a licence agreement with World Trade Centers Association, Inc., to use the name of 'World Trade Center', 'WTC' and Map Design Logo of World Trade Center for the Chandigarh project as "World Trade Center Chandigarh" and "WTC Chandigarh". The content provided in this document does not constitute as an invitation, legal offering or promise. No claim is made as to the accuracy or authenticity of the content. All representations made are for illustrative purpose and are not intended to be exhaustive. All images are artistic impressions and indicative only, layout of the project, design and shape of the buildings, name of the towers are tentative and may change at developers discretion. The brand names and logos used herein are registered trademarks of their respective companies. Any unauthorized use thereof in any manner is prohibited. Please refer to the booking application and agreement issued by the company for detailed terms and conditions.